

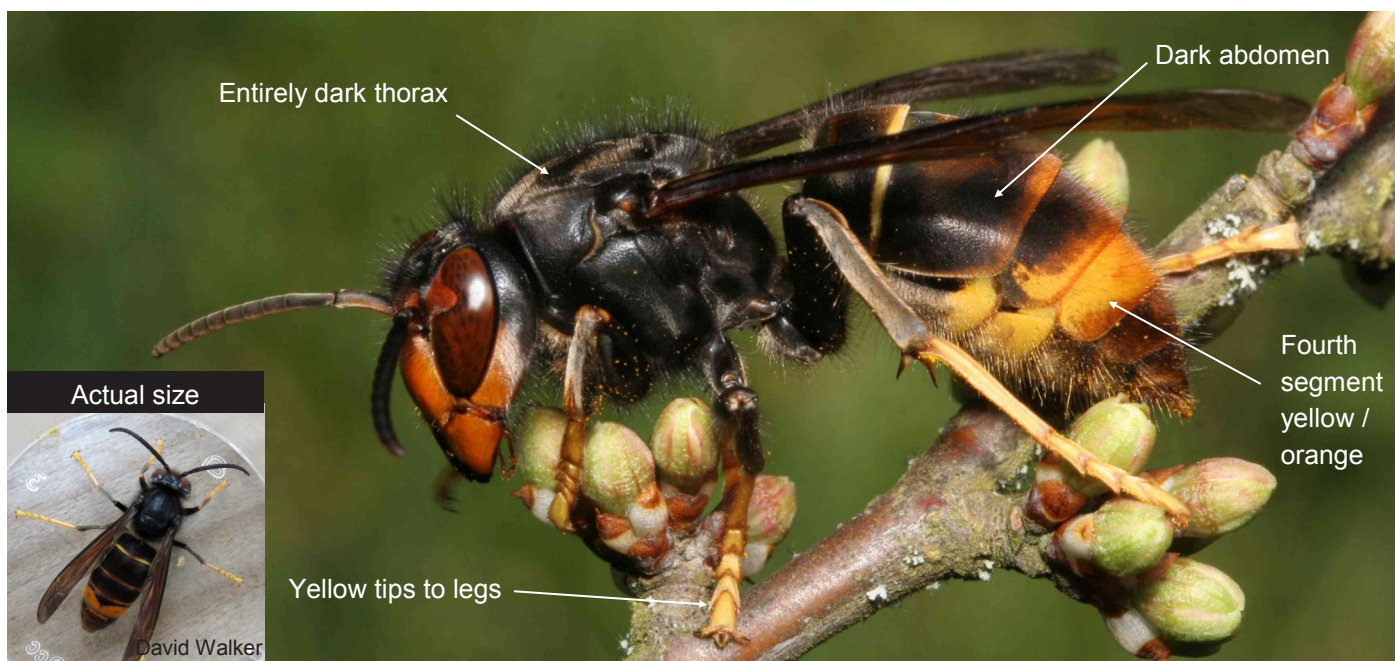
## ASIAN HORNET

*Vespa velutina*

### What is it?

An invasive non-native hornet originally from Asia. Asian hornet is a highly aggressive predator of native insects and poses a significant threat to honey bees and other pollinators. In 2004 it was accidentally introduced to France where it has spread rapidly and into neighbouring countries. Since 2016 a number of sightings have been recorded in the UK.

**Suspected sightings should be reported immediately using the details provided at the bottom of this poster.**



### Where might I see it?

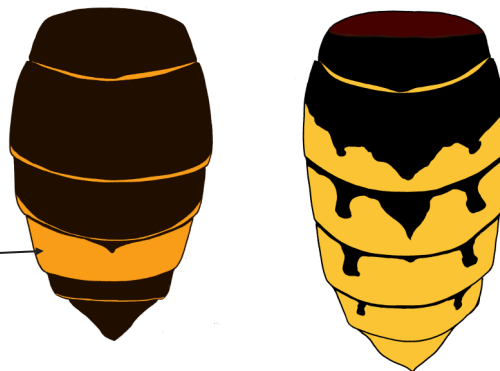
May be seen on flowering plants, around beehives, around rotting / fermenting fruit and protein, and at street markets attracted by sweet fruit and fish stalls.

Active from February to November across England and Wales.

### What does it look like?

- Slightly smaller than native hornet
- Dark abdomen, 4th segment yellow / orange
- Bright yellow tips to legs (native hornet dark)
- Entirely brown or black thorax (native hornet more orange)

Asian hornet abdomen    Native hornet abdomen



Asian hornet nest

'Hawks' outside honey bee colonies



### **DANGER!**

This hornet stings.  
Do not disturb an active nest.  
Seek advice using the details below.

Report any sightings of this species:

with the free iPhone and Android recording app: **Asian Hornet Watch**  
online at: **[www.nonnativespecies.org/alerts/asianhornet](http://www.nonnativespecies.org/alerts/asianhornet)**

by email: **[alertnonnative@ceh.ac.uk](mailto:alertnonnative@ceh.ac.uk)**